

HSF

NOTES:
 Current Rating:0.5AMP
 Voltage Rating: 50V AC/DC
 Contact Resistance:30mΩ max
 Withstand Voltage:100V AC for 1minute
 Insulation Resistance:500MΩ min
 Operation Temperature:-25°C to +105°C

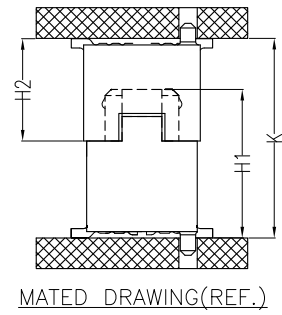
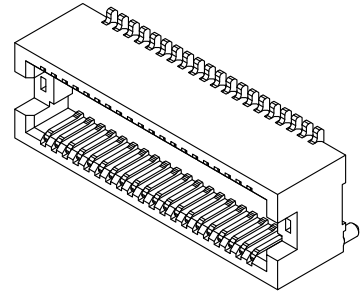
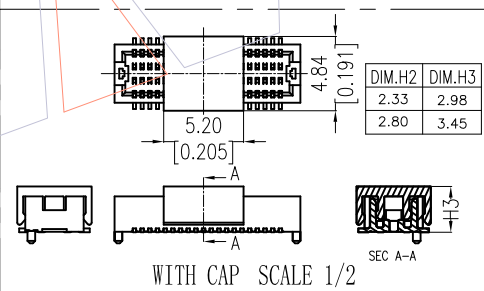
Housing Material:PA9T(UL94V-0),NATURAL
 Contact Material:Copper alloy
 Fixing Material:Copper alloy
 Contact plating:Au over Ni
 Fixing plating:Sn over Ni

Ordering Information

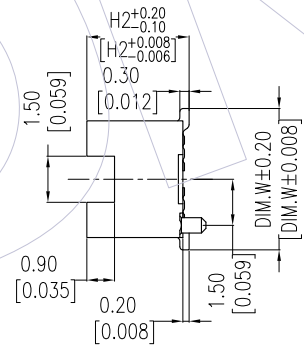
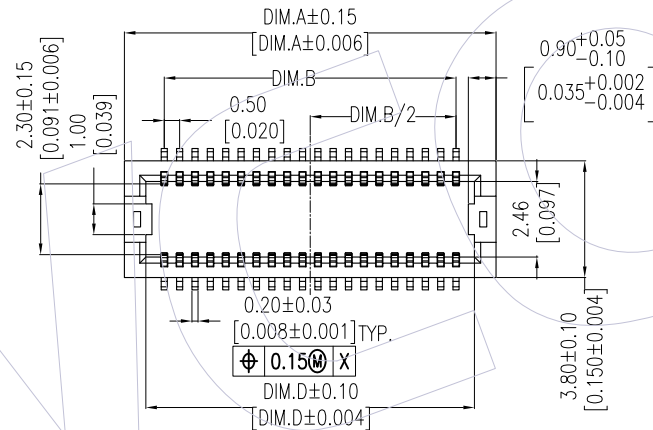
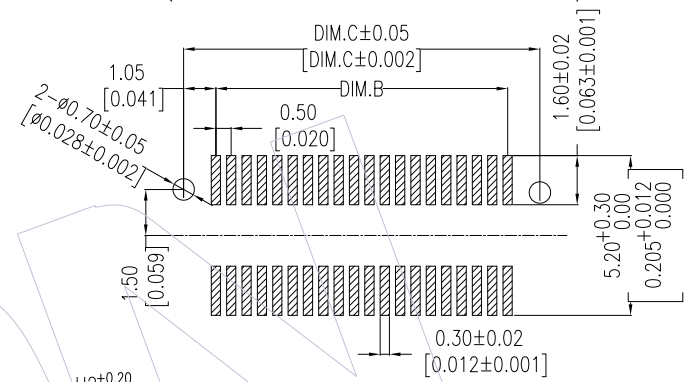
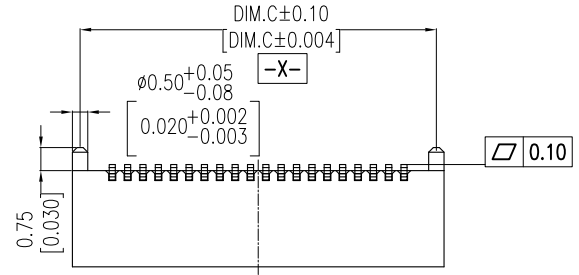
3622-P XXX - XXX XX X 01

No.of Pins Housing High Contact Plating T=Tube
 14P 36P 023=2.30 P=Tube+CAP
 20P 40P 028=2.80 G1=3u"Gold R=Tape&Reel+CAP
 24P 50P 033=3.30 G3=10u"Gold
 30P 60P 038=3.80 G4=15u"Gold
 32P 043=4.30 G5=30u"Gold
 048=4.80 H5=30u"Gold(Contact area,3u"Gold other area)

ASS'Y HEIGHT(K)	PLUG(H2)	SOCKET(H1)
3.00	2.33	2.20
3.50	2.80	
4.00	2.80	
4.50	3.33	2.73
5.00	3.83	
5.50	4.33	
6.00	4.83	
6.50	3.33	
7.00	3.83	
7.50	4.33	4.70
8.00	4.83	



Recommended P.C.B Layout (Top Side)
 (PCB BOARD TOLERANCE±0.05)



CAP	PART NO.	DIM.H2	DIM.W
WITH	3622-PXXX-023XXX01	2.33	4.60
	3622-PXXX-028XXX01	2.80	
W/O	3622-PXXX-033XXX01	3.33	
	3622-PXXX-038XXX01	3.83	
	3622-PXXX-043XXX01	4.33	
	3622-PXXX-048XXX01	4.83	

PIN NO.	DIM.A	DIM.B	DIM.C	DIM.D
14	5.60	3.00	5.10	4.20
20	7.10	4.50	6.60	5.70
24	8.10	5.50	7.60	6.70
30	9.60	7.00	9.10	8.20
32	10.10	7.50	9.60	8.70
36	11.10	8.50	10.60	9.70
40	12.10	9.50	11.60	10.70
50	14.60	12.00	14.10	13.20
60	17.10	14.50	16.60	15.70

REV	DATE	MODIFICATION DESCRIPTION	CHANGE	OPERATION	DRAW	DATE	SCALE	Fit	PART NO.
				x.X ±0.40	Ding	2018/03/13	UNIT	mm	3622-PXXX-XXXXXX01
A1	2018/03/13	Modify	-----	x.XX ±0.25	CHECK	DATE	SIZE	A4	TITLE:
AO	2018/02/01	NEW	-----	x.XXX ±0.15	APPROVE	DATE	SHEET	1/1	0.50pitch BTB MALE SMT TYPE W/O LATCH
				Angle ± 3'			PROJ.	Customer NO.	

WCON
 Http: www.wcon.com

WCON-Dongguan WCON-Kunshan
 Tel: +86 769 85358920 Tel: +86 512 57468408
 Fax: +86 769 85358915 Fax: +86 512 57468468
 E-mail: sales@wcon.com E-mail: salesks@wcon.com